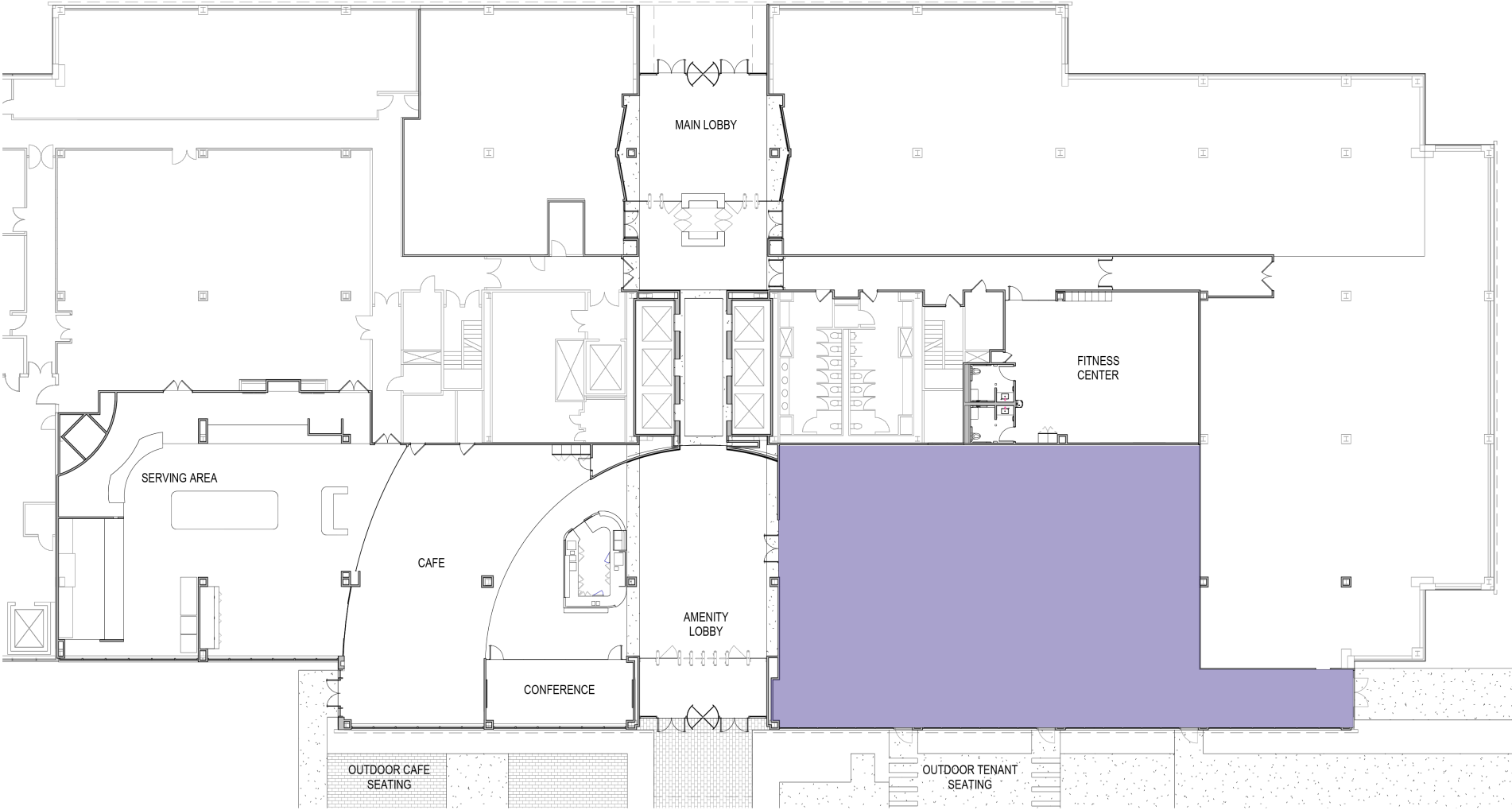


# 194 Wood Avenue South, Iselin, NJ

First floor – 6,755 sf



For further information, please contact:

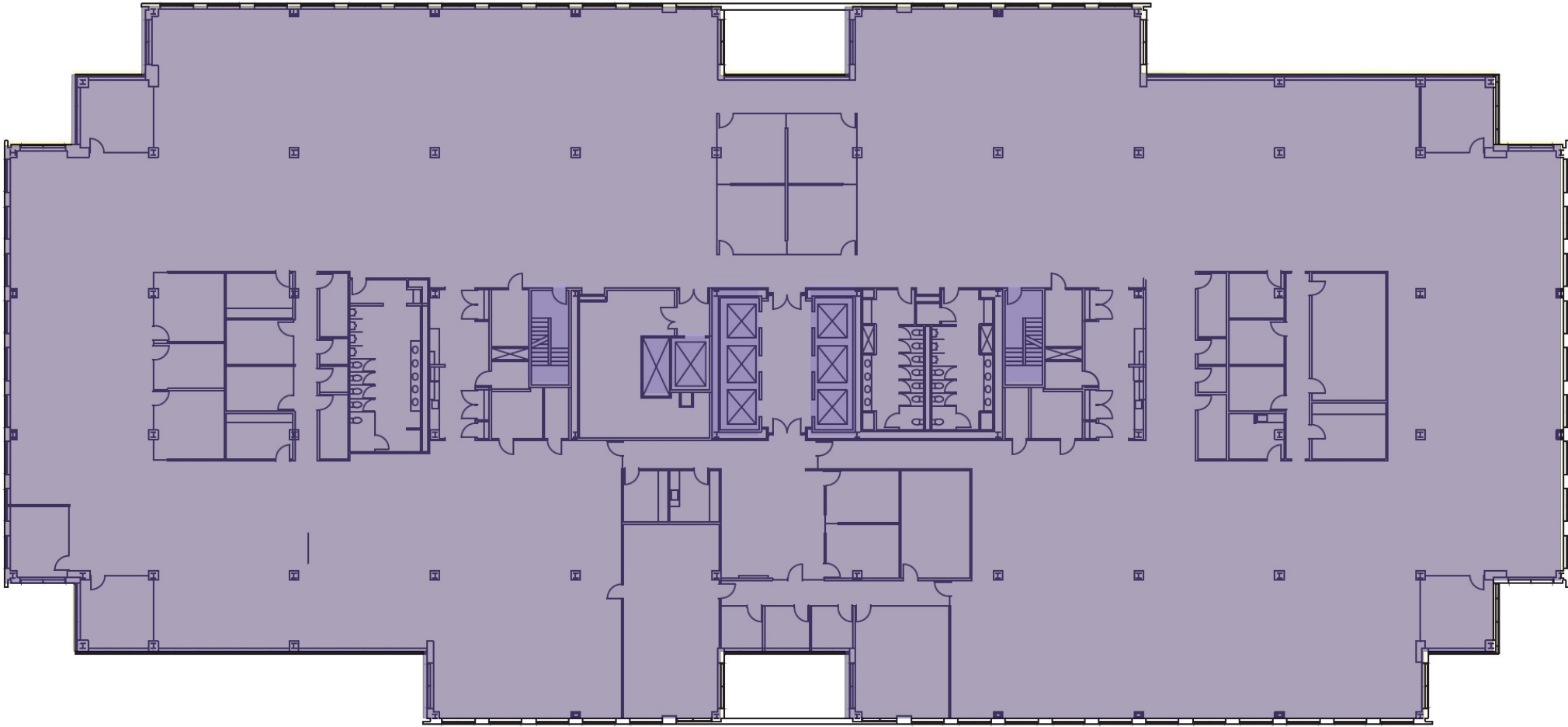
**Jeffrey L. Heller, SIOR**, Principal & Managing Director  
D +1 973 753 1100 | C +1 973 699 4987  
[jeff.heller@avisonyoung.com](mailto:jeff.heller@avisonyoung.com)

**William E. McCaffrey**, Principal  
D +1 973 753 1102 | C +1 201 826 8861  
[william.mccaffrey@avisonyoung.com](mailto:william.mccaffrey@avisonyoung.com)



# 194 Wood Avenue South, Iselin, NJ

Second floor – 50,648 sf



For further information, please contact:

**Jeffrey L. Heller, SIOR**, Principal & Managing Director  
D +1 973 753 1100 | C +1 973 699 4987  
[jeff.heller@avisonyoung.com](mailto:jeff.heller@avisonyoung.com)

**William E. McCaffrey**, Principal  
D +1 973 753 1102 | C +1 201 826 8861  
[william.mccaffrey@avisonyoung.com](mailto:william.mccaffrey@avisonyoung.com)



# 194 Wood Avenue South, Iselin, NJ

Sixth floor - 11,375 sf



For further information, please contact:

**Jeffrey L. Heller, SIOR**, Principal & Managing Director  
D +1 973 753 1100 | C +1 973 699 4987  
[jeff.heller@avisonyoung.com](mailto:jeff.heller@avisonyoung.com)

**William E. McCaffrey**, Principal  
D +1 973 753 1102 | C +1 201 826 8861  
[william.mccaffrey@avisonyoung.com](mailto:william.mccaffrey@avisonyoung.com)

